

a deepening relationship with Jesus and the life of the Church, and through these a more just and loving engagement with the world.

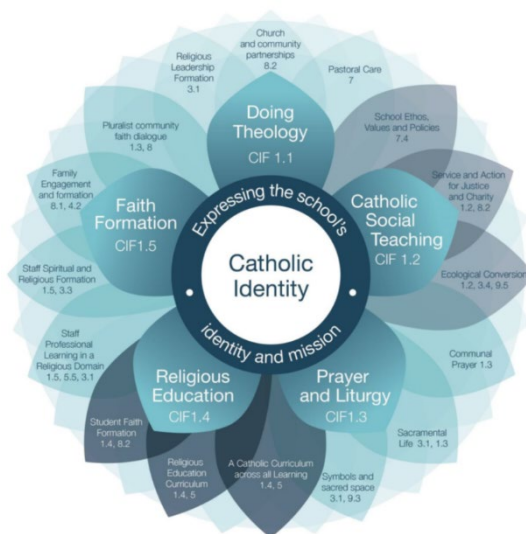
The APRIM engages with mission in their religious leadership. Leaders, animated by the Catholic faith and in partnership with families, create a sustainable educational environment which resonates culturally and deeply within the community. In this way, leaders create opportunities for all to experience the love of God through “encountering life to the full – in all its personal, religious, political and cultural riches”.

The APRIM draws on social contexts and life experiences in their religious leadership. Catholic schools today exist in social contexts 2vangelizatio by diversity, including changing religious practice and a plurality of religious faiths existing in a secular space. Religious leadership in these school communities discerns and implements meaningful, respectful and effective ways to engage students, staff and families with Christian faith. This leadership promotes the Catholic identity of a school in a way that honours the Catholic Tradition and respects and learns from the faiths of all students.

The APRIM enhances the Catholic identity of the school. The APRIM’s leadership is animated by a deep and reflective faith in Jesus Christ that is expressed in, and nourished by, the Catholic Eucharistic community to which the APRIM belongs. As the key designated religious leader in the school, the APRIM is publicly committed to the ministry of vangelization in “bringing the Good News to all strata of humanity”. Catholic school communities and their leaders are called to open up and share Catholic faith effectively and joyfully so that the Good News proclaimed by Jesus can be broken open for all students, staff and families in meaningful and effective ways. To this end, the Catholic identity of a school community is enhanced as the school community:

- engages in a faith that seeks understanding, and which is interpretive;
- embraces respectful dialogue between the many voices in the pluralist culture and Catholic faith;
- seeks and re-imagines new expressions of being Catholic as a consequence of this dialogue and the contemporary contexts and realities of the community.

The APRIM exercises leadership in the areas of Faith and Religious Education, Learning, Community and Culture building, and Resource Operations as appropriate to their role. The APRIM is a skilled educator and leader who works with staff, students and the broader school and church communities. The APRIM’s role is multifaceted and many elements are named in Area 1 (Catholic Identity) of the CESA *Living Learning Leading Standard* (2020) and outlined in the *Continuous Improvement Framework* domains of ‘Catholic Identity’ (Domain 1) and ‘Strong Leadership’ (Domain 3). The APRIM works in collaboration with others to develop theological reflective practice (‘Doing Theology’) in the school, incorporate Catholic Social Teaching into the life of the school, lead for quality teaching and learning in the Religious Education curriculum, develop the prayer and liturgical life of the school, and foster the faith formation of students, staff and the school community. The APRIM also has influence over the many other tangible facets of school life that reflect its Catholic identity and mission:



Expressions of the Catholic identity of the College

Key Responsibilities

Leadership in Faith and Catholic Identity

Together with the College Principal (or delegate) who is responsible in a unique way for the College's religious identity, the APRIM:

- Promotes the mission of the Catholic Church and actively engages in its ministry.
- Promotes the identity and mission of the College as a Catholic Dialogue School with collegial strategic discernment and planning.
- Assists the College to express its Catholic faith in contemporary and accessible ways.
- Witnesses to a deep appreciation of Catholic beliefs and values.
- Provides collegial leadership in the development and implementation of the Religious Education (RE) curriculum.
- Promotes a vibrant sacramental life.
- Provides leadership in prayer/liturgy/retreat programs and other religious celebrations.
- Provides leadership in the spiritual formation of staff.
- Provides leadership in the faith formation of students.
- Promotes awareness of, and commitment to, issues of social justice and ecological conversion.
- Promotes Parish/school partnerships.
- Builds on and nurtures the religious culture of the College including, where relevant, the charism of the College's founding community.

Leadership in Learning and Religious Education

The APRIM:

- Contributes to a contemporary and inclusive educational vision for the College.
- Contributes to the development of all learning areas and the whole curriculum with a contemporary Catholic understanding of the human person, education and mission.
- Fosters and demonstrates quality practice in teaching and learning particularly in the religious domain through a range of strategies, including the APRIM's formal and informal teaching involvement.
- Ensures a quality curriculum based on Crossways RE Curriculum and that takes account of student needs and the requirements of Church, State and Federal bodies.
- Leads the development of the RE curriculum of the College in dialogue with students' worldviews and faith traditions.
- Ensures that the RE curriculum, and the structures that support it, address the needs of all students.
- Ensures appropriate assessment and reporting processes in RE.
- Leads the use of data and evidence together with reflective practice to inform improvement in current pedagogy and learning.

Leadership in Community and Culture

The APRIM:

- Supports parents and caregivers in their role as first and continuing educators in faith.
- Collaborates with others in the College and wider community to enhance the Catholic identity and mission of the College.
- Contributes to the creation of a safe, healthy and interdependent school community.
- Fosters an open, harmonious and spiritually enriched staff culture.
- Works effectively with College Board, Parish and parent organisations.
- Fosters quality relationships between the College, the Parish and the wider community.

- Promotes the College in the Parish worshipping community and ensures the College participates in the Parish as appropriate.
- Contributes as appropriate to the work of Catholic Education SA.

Leadership in Resource Operations

The APRIM:

- Human Resources
 - Promotes and facilitates staff access to professional development in the Religious domain.
 - Identifies and mentors emerging religious leaders in the College community.
 - Collaborates with other staff, including appropriate delegation of tasks and support.
 - Contributes to the College Strategic Plan in collaboration with the Campus Principal, College leadership team and College community, particularly as it pertains to the religious domain.
 - Assists in the implementation of Work Health and Safety practices by complying with the policies and procedures outlined in the Catholic Church Safety Manual and the priorities of the exempt licence to ensure that the College is a safe place for all.
- Physical Resources
 - Ensures the provision of contemporary resources for learning and teaching in RE.
 - Provides leadership with the application of principles of integral ecology to the use of resources in the College.
 - Provides for appropriate risk management.
 - Contributes to the implementation of Work Health and Safety practices in relation to the College site.
 - By complying with the policies and procedures outlined in the Catholic Church Safety manual and the priorities of the exempt licence.

Person Specification

The APRIM will:

- be a Catholic who is an active member of a Catholic Sunday Eucharistic community.
- be able to demonstrate exemplary commitment to the Catholic Church and its teaching.
- be a skilled educator and committed learner.
- be strongly committed to the development of the religious dimension of the Catholic school.
- have excellent skills in the design and delivery of Religious Education curriculum with demonstrated ability with employing contemporary pedagogies.
- be committed to and capable of working collaboratively in a partnership model.

Qualifications and Experience

The APRIM will have:

- Registration as a teacher in South Australia.
- Accreditation to Teach in a Catholic School (CESA).
- completed, or embarked upon prior to appointment* (with a minimum of acceptance into the degree and enrolment in a unit), a relevant Master's Degree in Catholic Studies (e.g. Religious Education, Theological Studies or Catholic Educational Leadership) which has a substantial component of theology, or comparable qualification (e.g. a Bachelors Degree of Theology). There needs to be a minimum of 4 tertiary units in Theology (inclusive of scripture) across all qualifications. (*This requirement is to be completed by the second period of tenure).
- At least 5 years teaching experience as a successful teacher of Religious Education.
- Endorsement from College leadership of demonstrated leadership capabilities.

It is recommended that the APRIM will have completed a recognised leadership preparation program such as the Aspiring Leaders Program or possess equivalent experience.

Role Requirements

- Current and acceptable Working with Children Clearance and screening to work in Catholic Education SA
- Acquire and maintain Catholic Police Clearance to work in Catholic Education SA
- Current Responding to Risks of Harm, Abuse & Neglect – Education and Care certificate
- First Aid certificate (HLTAID012)
- Disability Standards for Education training
- As a worker, comply with the SA Work Health & Safety Act 2012 and, while at work, take reasonable care for their own health and safety.
 - Take reasonable care that your actions or omissions do not adversely affect the health and safety of other persons.
 - Comply, in so far as you are reasonably able, with any reasonable instruction given by the employer.
 - Co-operate with any reasonable policy or procedure of the employer that is related to health and safety at the workplace that has been notified to workers.

Being vaccinated against COVID-19 is not mandatory for CESA staff. It is highly recommended for all CESA staff to maintain vaccination status as recommended by the policy.

Other Conditions

The APRIM is required to:

- Participate in good character screening processes and hold a current acceptable Police clearance;
- Act at all times in accordance with the CESA Code of Conduct;
- Comply with the Work Health & Safety management system and, as a worker, while at work:
 - take reasonable care for their own health and safety
 - take reasonable care that their actions or omissions do not adversely affect the health and safety of other persons
 - comply, in so far as they are reasonably able, with any reasonable instruction given by the employer
 - co-operate with any reasonable policy or procedure of the employer that is related to health and safety at the workplace that has been notified to workers. (Ref: Division 4, Section 27 & 28 – SA Work Health and Safety (WHS) Act 2012)
- WHS for Officers training and First Aid training prior to, or as soon as possible after appointment.
- Participate in regular professional review processes.
- Have a current South Australian driver's licence.
- Be able to travel intrastate for professional learning.